

Liquid Bio-Magnetic Face Masques

Self Heating Thermal or Soothing Cooling Versions

The theory behind the Liquid Bio-Magnetic Beauty Mask and how it works is very simple.

Over the past centuries, a basic known fact is that iron is attracted to a magnet. Each Red Blood Cell in the body contains iron. The iron is attracted to the face area where the Liquid Bio-Magnetic Face Masque has been applied and will increase the flow of blood to the face. (Figure 1)

An increase of blood supply to any given part of the body will also help to revitalize and re-nourish the body's tissues. This will cause the skin to soften and wrinkles to diminish.

This product has also incorporated a technology called:

HEAT INFINITY

LONG LASTING SELF-HEATING PENETRATING TECHNOLOGY

PATENT-PENDING TECHNOLOGY

With this technology any added active will easily penetrate into the skin.

Besides Beauty treatment, the Masque also serves to help with sinus problems, headaches, migraines, toothaches, facial paralysis and a host of other problems. The magnetic property of the the Liquid Bio-Magnetic Face Mask stimulates the Pineal Gland located in the Brain and creates a Magnetic Field which enhances the generation of Melatonin which facilitates the onset of natural sleep and could reset the body's aging clock.

By applying the Liquid Bio-Magnetic Beauty Mask daily you should soon notice an improvement in your skin and other ailments. For maximum benefits, it is recommended that the Liquid Bio-Magnetic Face Mask be applied and worn for 10-15 minutes.

This mask is available in either a SELF-HEATING Thermal Version, or Soothing Cooling Version.

For more information on what Beilis Development can do for you, please contact:

Beilis Development
20-21 Wagaraw Road, Building 31
Fair Lawn, NJ 07410
Phone: 973-559-5670 Fax: 973-556-1932
Beilisdevelopment.com
Customerservice@Beilisdevelopment.com

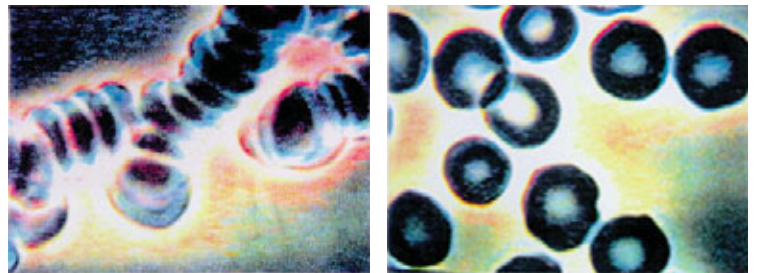
©2006 Beilis Development



Enjoy a relaxing facial treatment that does not require the use of velcro straps, plastic masks, or elastic ties.



Figure 1.



Note the red blood cells travel in clusters. This clustering is typical of fatigue, stress and health problems, which are present in most people in varying degrees of severity.

The magnetic field influences the iron in the blood cells, spins the cells around and points them in one direction. This alignment or polarization of the red blood cells allows the cells to repel each other and frees surface area to carry oxygen and release more carbon dioxide.